



Pollution Incident Response Management Plan

For the Construction and Demolition Waste Recycling Facility
at 30 (Lot 502) Nells Road, West Gosford, NSW

July 2018



TABLE OF CONTENTS

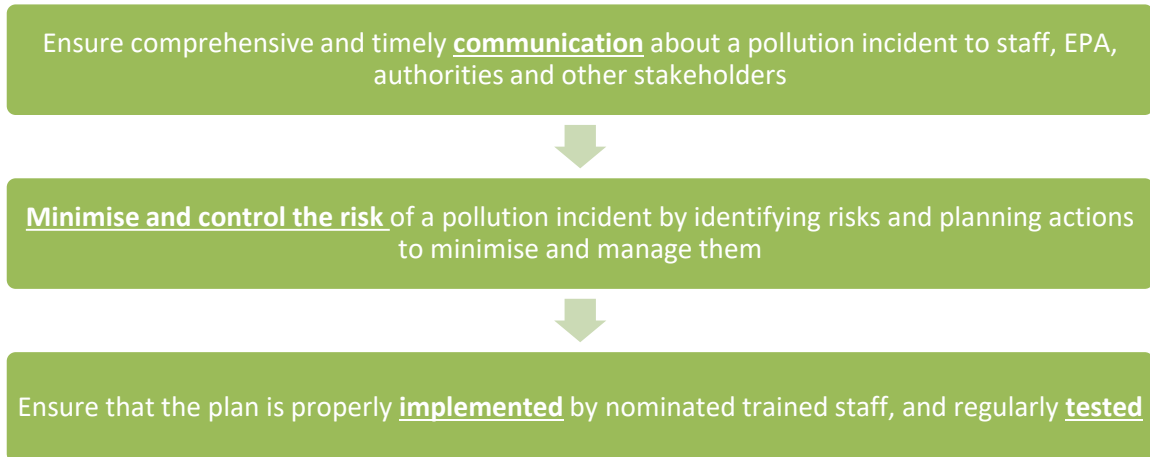
1.	Purpose of this plan	3
2.	About the site	4
2.1	Site location	5
2.2	Overview of waste receipt and processing.....	7
2.3	Nearest sensitive receptors	8
2.4	Adjoining premises	9
3.	Description and likelihood of the main hazards	10
4.	Pre-emptive actions to be taken	12
5.	Inventory of pollutants.....	13
6.	Safety and clean-up equipment	13
7.	Contact details & responsible person.....	14
8.	Actions to be taken during or immediately after a pollution incident	15
8.1	Notify agencies.....	15
8.2	Minimise harm to people on the premises	16
8.3	Reduce and control pollution	17
8.4	Communicate with neighbours and the community	18
9.	Staff training and testing this plan	19
9.1	Staff training.....	19
9.2	Testing this plan	19
10.	Location of pollutant storage, evacuation point and drains.....	20

Version number	Date of issue	Prepared by	Approved by	Description of amendments
0	January 2018	Miriam Cumming, A.Prince Consulting Pty Ltd	Andrew Quinn	Draft PIRMP
1	January 2018	Miriam Cumming, A.Prince Consulting Pty Ltd	Therese Calleija	Final

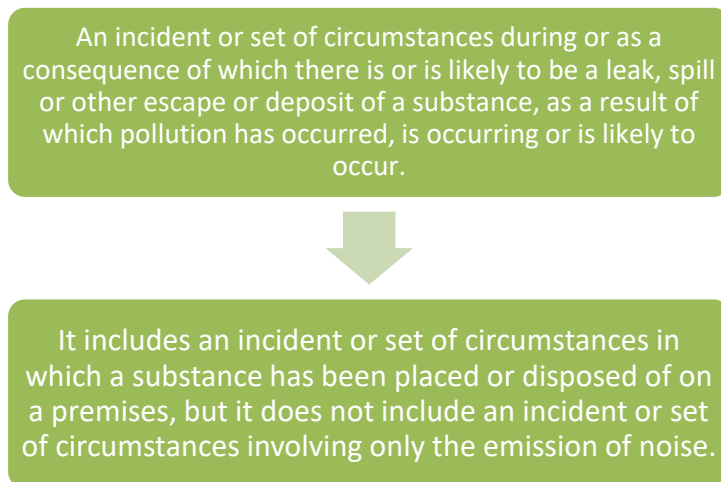
1. PURPOSE OF THIS PLAN

Under the NSW *Protection of the Environment Operations Act 1997*, holders of an Environment Protection Licence must prepare and implement a Pollution Incident Response Management Plan (PIRMP).

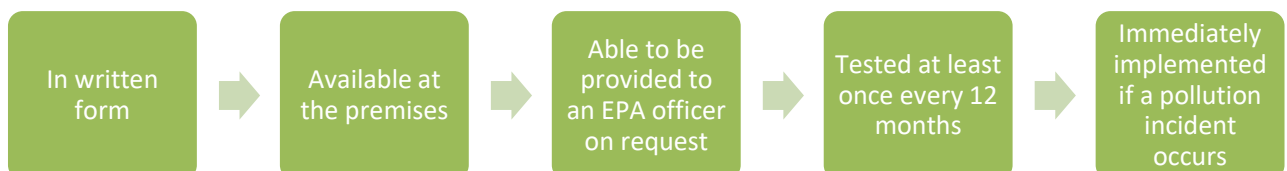
The objectives of the PIRMP are to:



A “pollution incident” is defined as:



The PIRMP must be:



2. ABOUT THE SITE

Address	<ul style="list-style-type: none">• 30 Nells Road, West Gosford NSW 2250
Lot number	<ul style="list-style-type: none">• Lot 502, DP1034080
Site size	<ul style="list-style-type: none">• approximately 8,000m²
LGA	<ul style="list-style-type: none">• Gosford
Zoning	<ul style="list-style-type: none">• Zoned <i>IN1: General Industrial</i> under Gosford LEP 2014
Regulatory Controls	<ul style="list-style-type: none">• The site operates under a current development consent (Gosford Council Determination #10452/2000)• The site operates under NSW Environment Protection Licence 20648 which permits resource recovery and waste storage
Waste types accepted	<ul style="list-style-type: none">• Construction and demolition waste• Dry commercial and industrial waste• Total received: between 1,500 and 3,000 tonnes per month
Operating hours	<ul style="list-style-type: none">• 6.00 am to 5.30 pm Monday to Friday• 6.30 am to 2.00 pm Saturday
Ownership	<ul style="list-style-type: none">• The site is leased by Economy Waste Group from Calleija Group Pty Ltd

2.1 Site location

Figure 1, Figure 2 and Figure 3 show the location and features of the site.

Figure 1 Site location



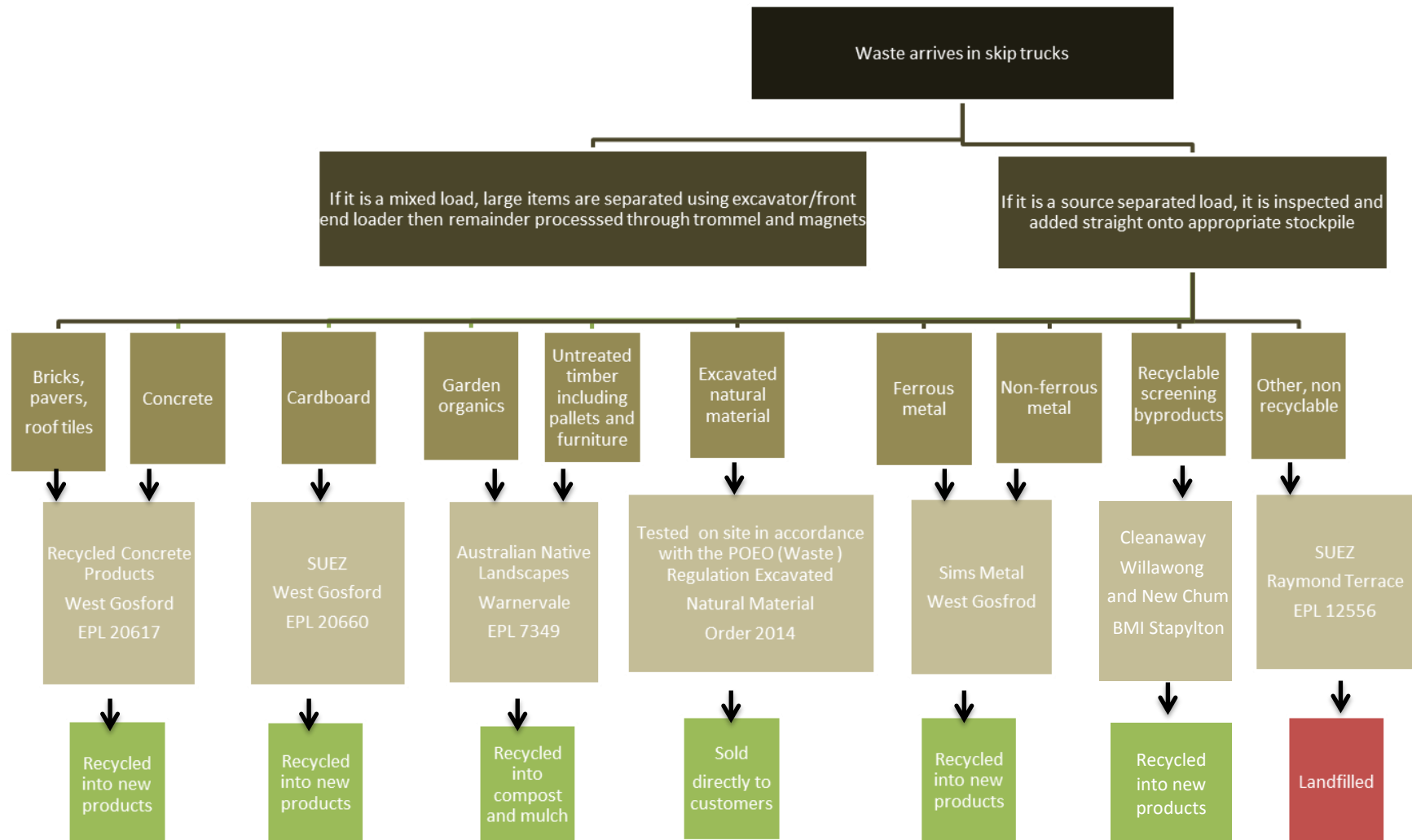
Figure 2 Aerial view of site



Figure 3 Site features



2.2 Overview of waste receival and processing



2.3 Nearest sensitive receptors

The site is located in the West Gosford industrial precinct. The nearest residence is approximately 500 m away. The closest waterway is a small creek behind the Lot, a tributary of Narara Creek, which flows into Fagans Bay. The site is not close to wetlands.

Nearest residential receptors:
Kowara Rd, Somersby (more
than 500 m from site)

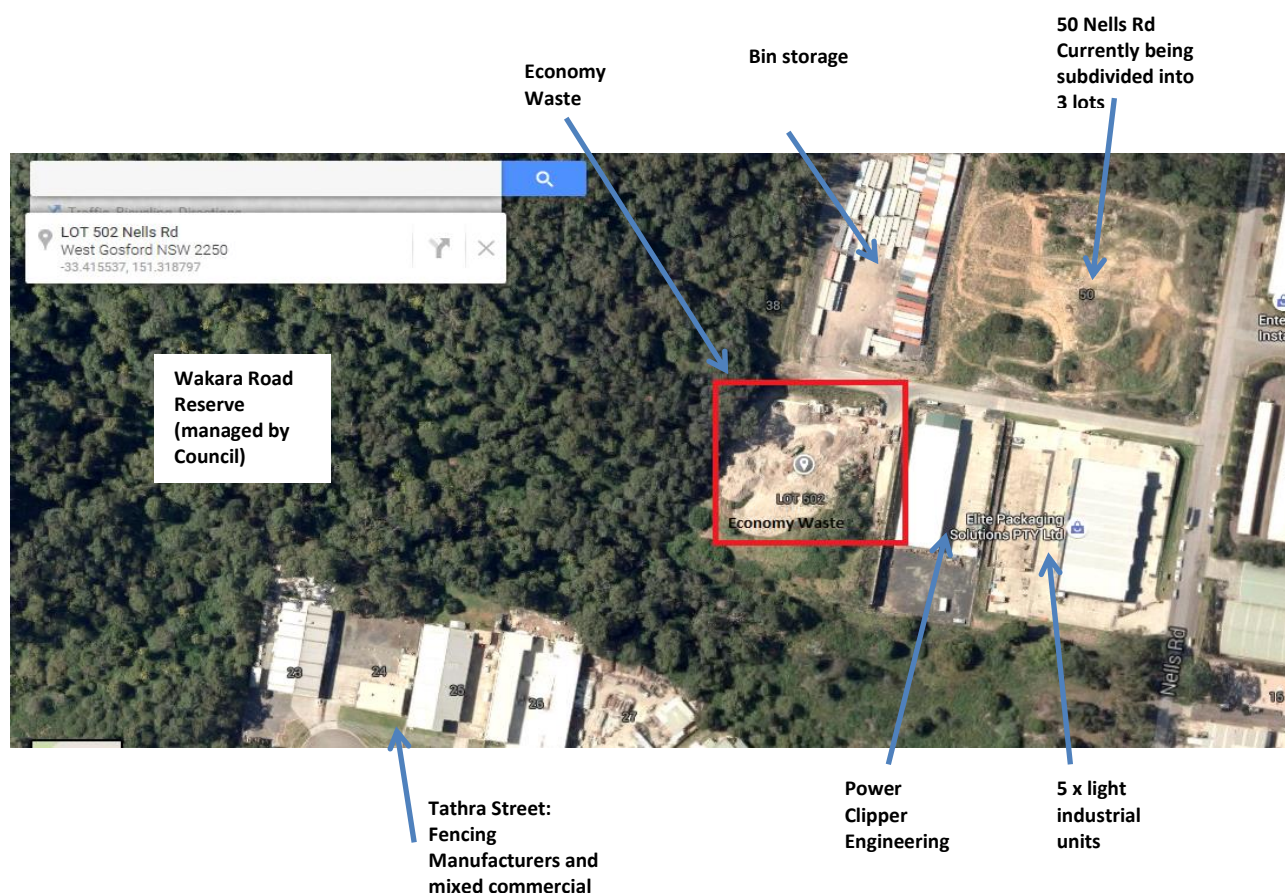
Small Creek (joins
Narara Creek)



2.4 Adjoining premises

The site is located in an industrial area, and is surrounded by industrial and commercial premises to the north, east and south. The site is only accessible through Nells Road.

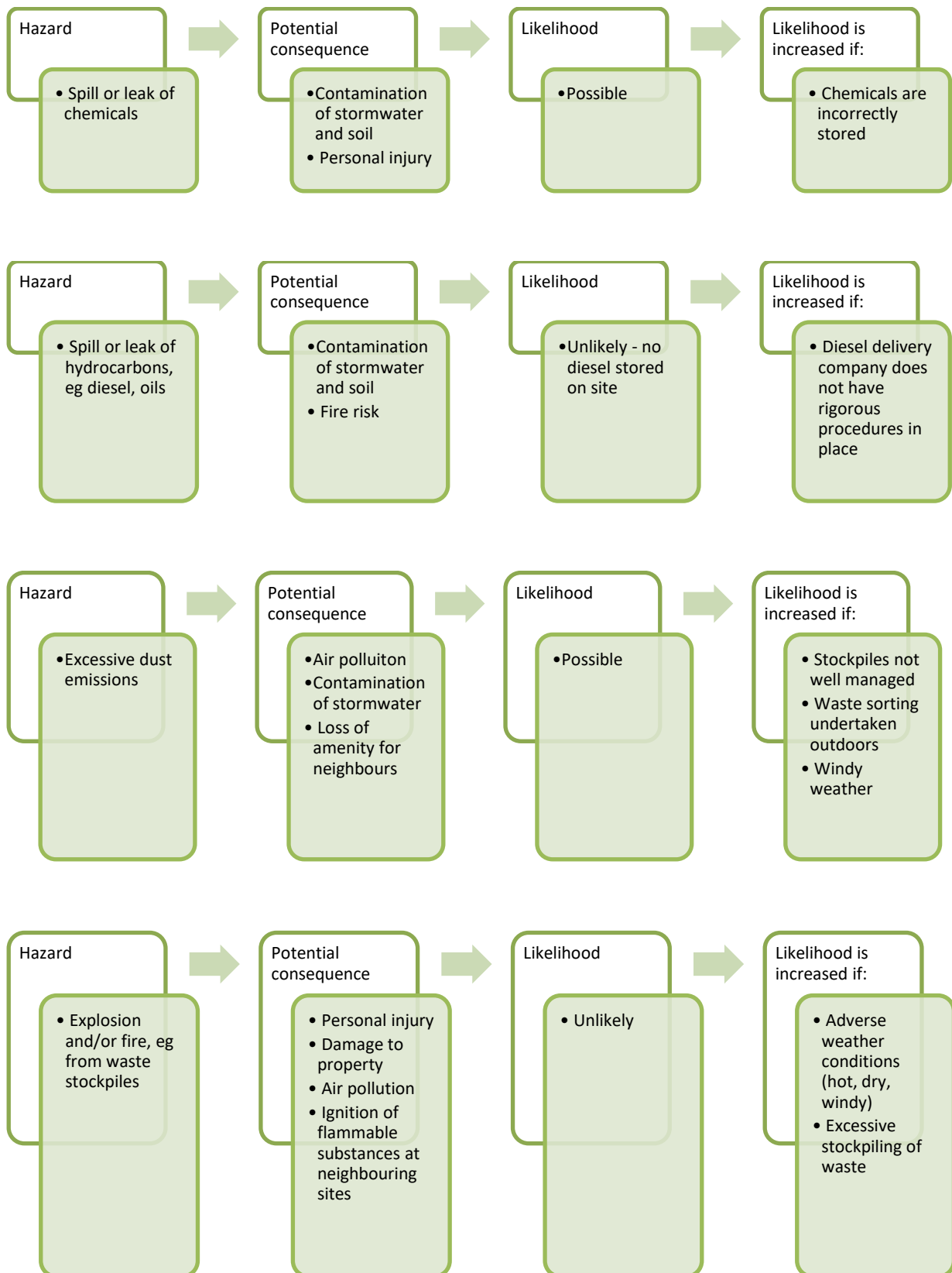
The map below shows the site's immediate neighbours.



The activities of the adjoining site and businesses are described below.

50 Nells Road	Wakara Road Reserve	Power Clipper Engineering	18 Nells Road light industrial units	Tathra St light industrial units
<ul style="list-style-type: none"> Subdivision into three lots approved by Gosford Council August 2017 Currently the subject of section 96 modification application 	<ul style="list-style-type: none"> Council managed land Moderate bushfire risk according to Council study Includes fire trails 	<ul style="list-style-type: none"> Occupies whole of Lot 501 Nells Road Computer Numerical Control (CNC) machining specialists 	<ul style="list-style-type: none"> Five light industrial/ commercial units Includes Pinnacle Electronics and Central Coast Mixed Martial Arts 	<ul style="list-style-type: none"> Light industrial / commercial units Includes Fencing Manufacturers, See All Security Systems and Drift Paddleboards

3. DESCRIPTION AND LIKELIHOOD OF THE MAIN HAZARDS



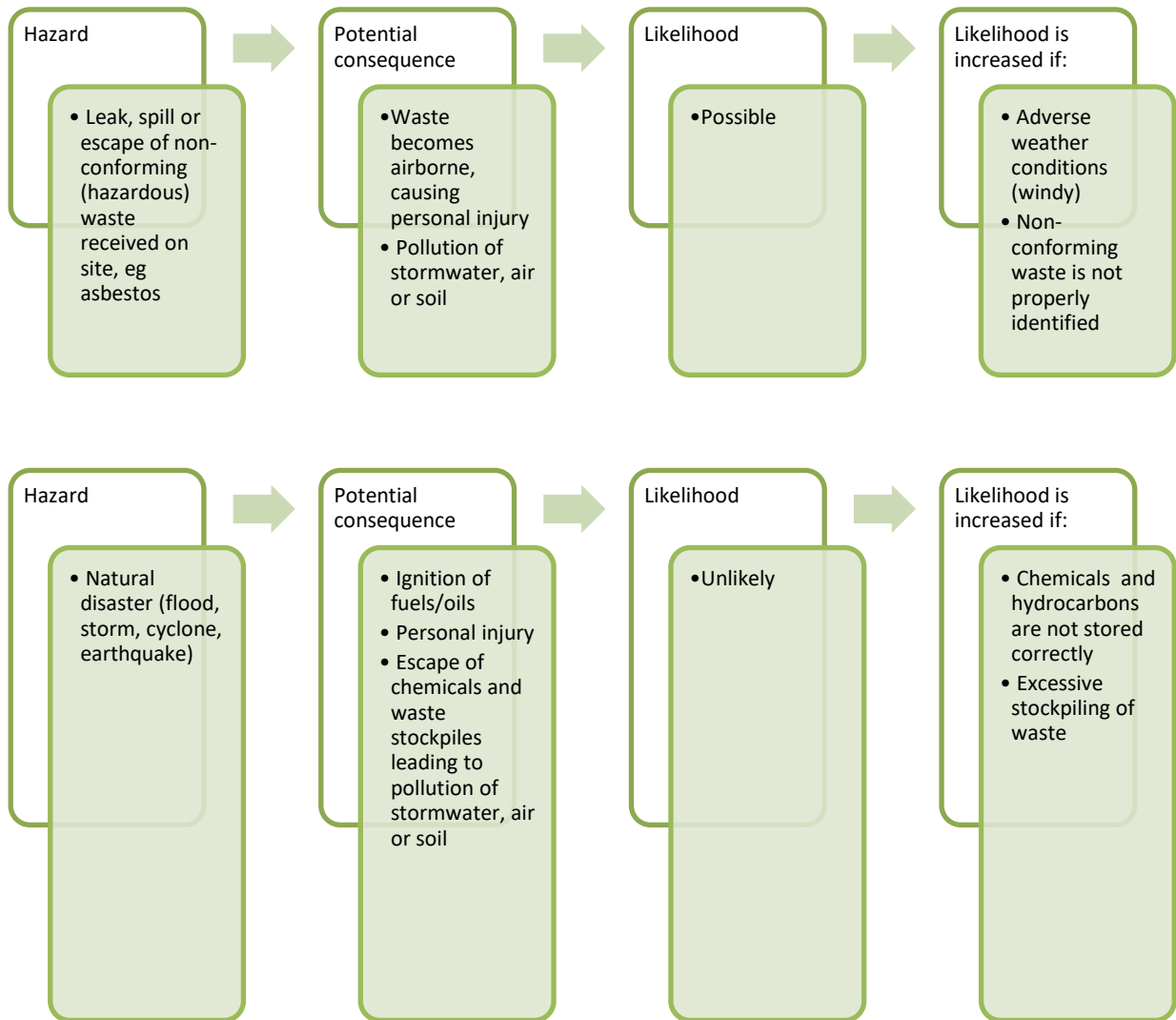
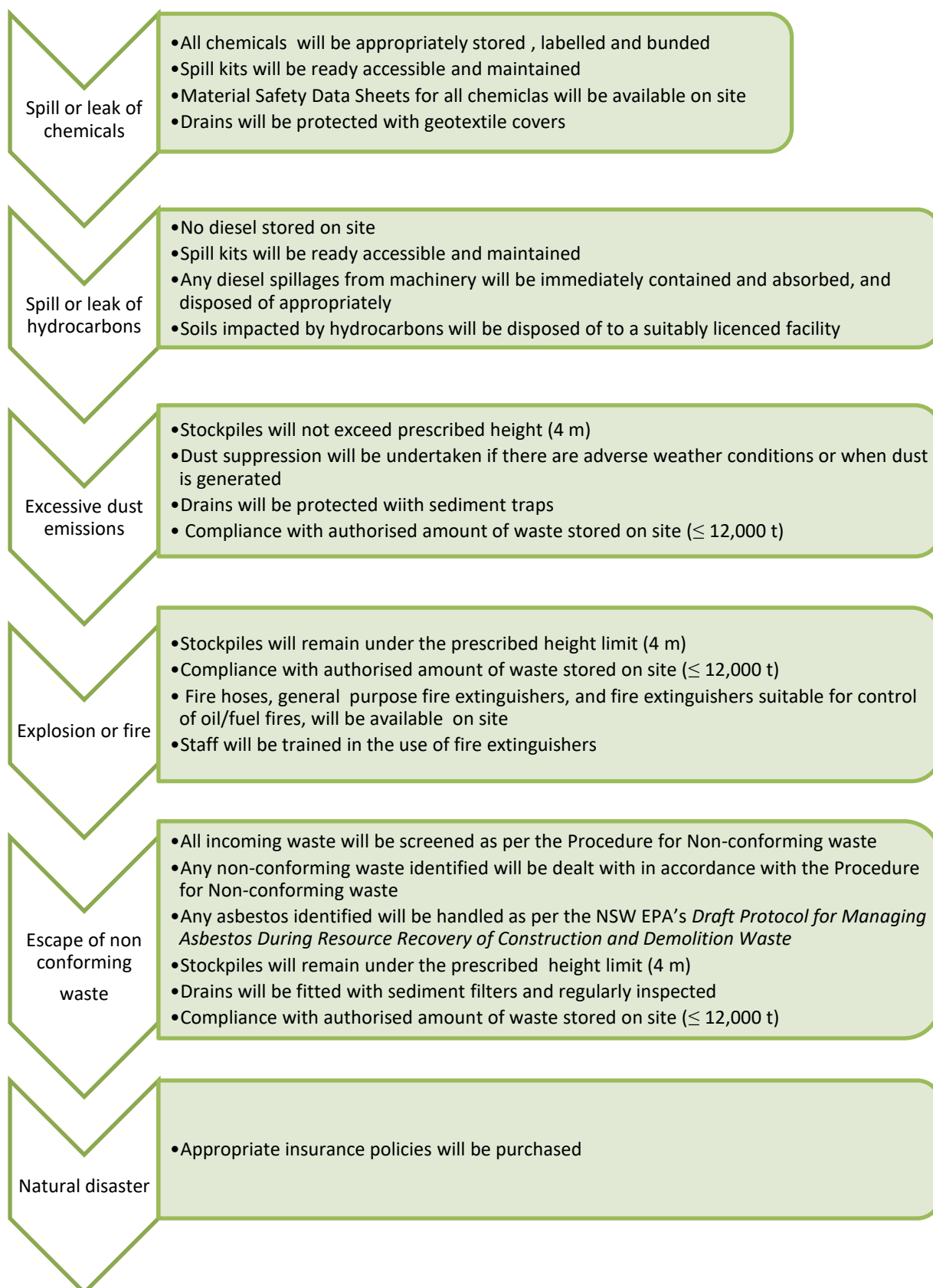


Image 1 Site operations

4. PRE-EMPTIVE ACTIONS TO BE TAKEN

The main hazards, and the mitigation measures in place for each one, are shown below.



5. INVENTORY OF POLLUTANTS

Potential pollutant	Storage location	Maximum quantity on site
Engine coolant	Workshop	20 litres
Hydraulic oil	Workshop	200 litres
Engine oil	Workshop	200 litres

6. SAFETY AND CLEAN-UP EQUIPMENT

Equipment	Location
Two way radios	Office and with site operators
Spill kits	Site office
Material Safety Data Sheets	Site office
Geotextile drain protectors	Stormwater drain near gate
First Aid Kit	In site office
Sandbags	Stormwater drain near gate
Fire extinguishers	Site office
Personal Protective Equipment	Worn by staff, spares in office

7. CONTACT DETAILS & RESPONSIBLE PERSON

The person responsible for implementing this plan is Therese Calleija.

In the case of a pollution incident, the following people should be notified immediately:

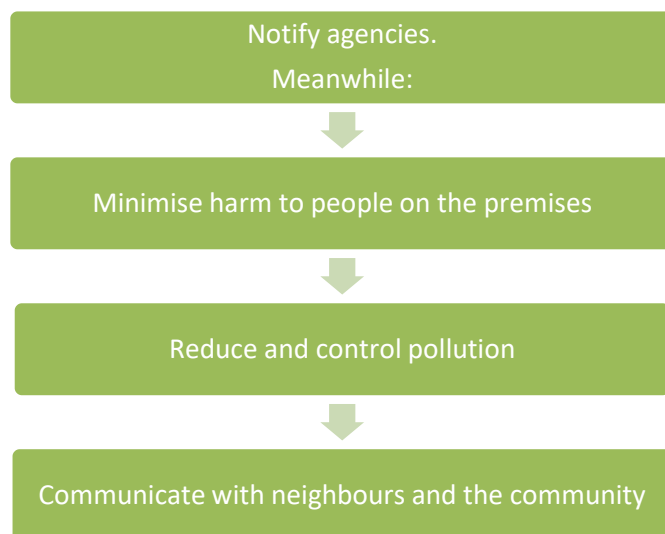
Primary site contact

- Therese Calleija
- Owner and Accounts Manager
- Economy Waste
- 02 4325 1800
- 0438 731 015

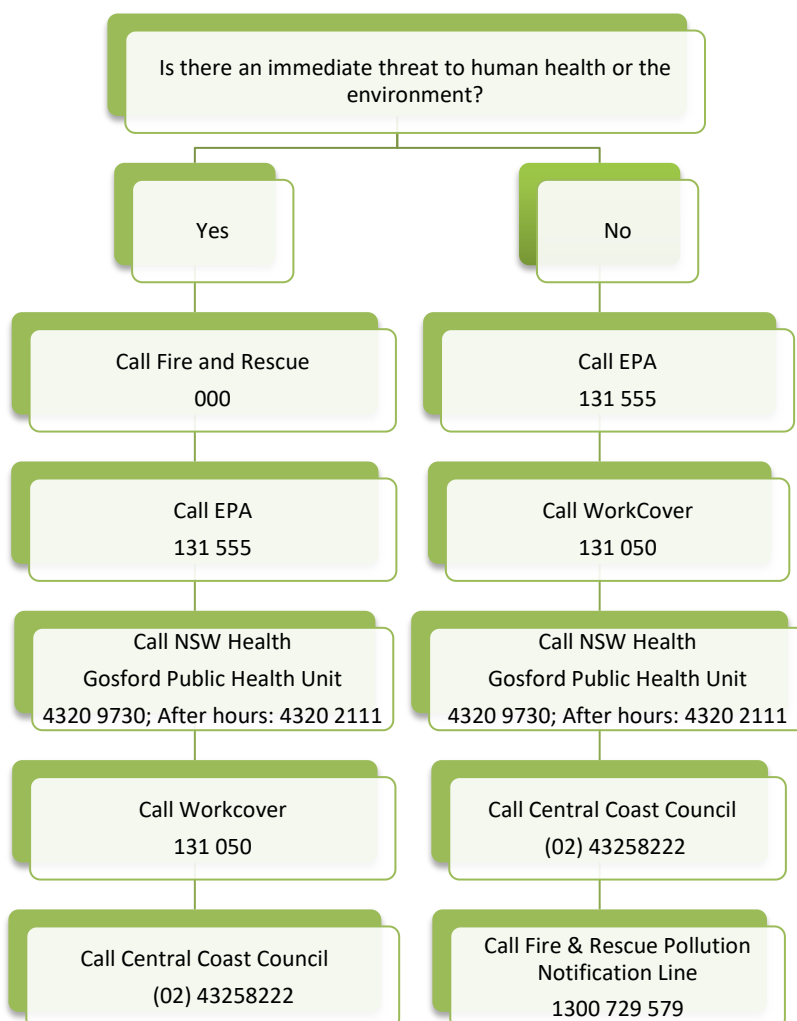
Secondary site contact

- Sam Calleija
- Director
- Economy Waste
- 0419 977 100

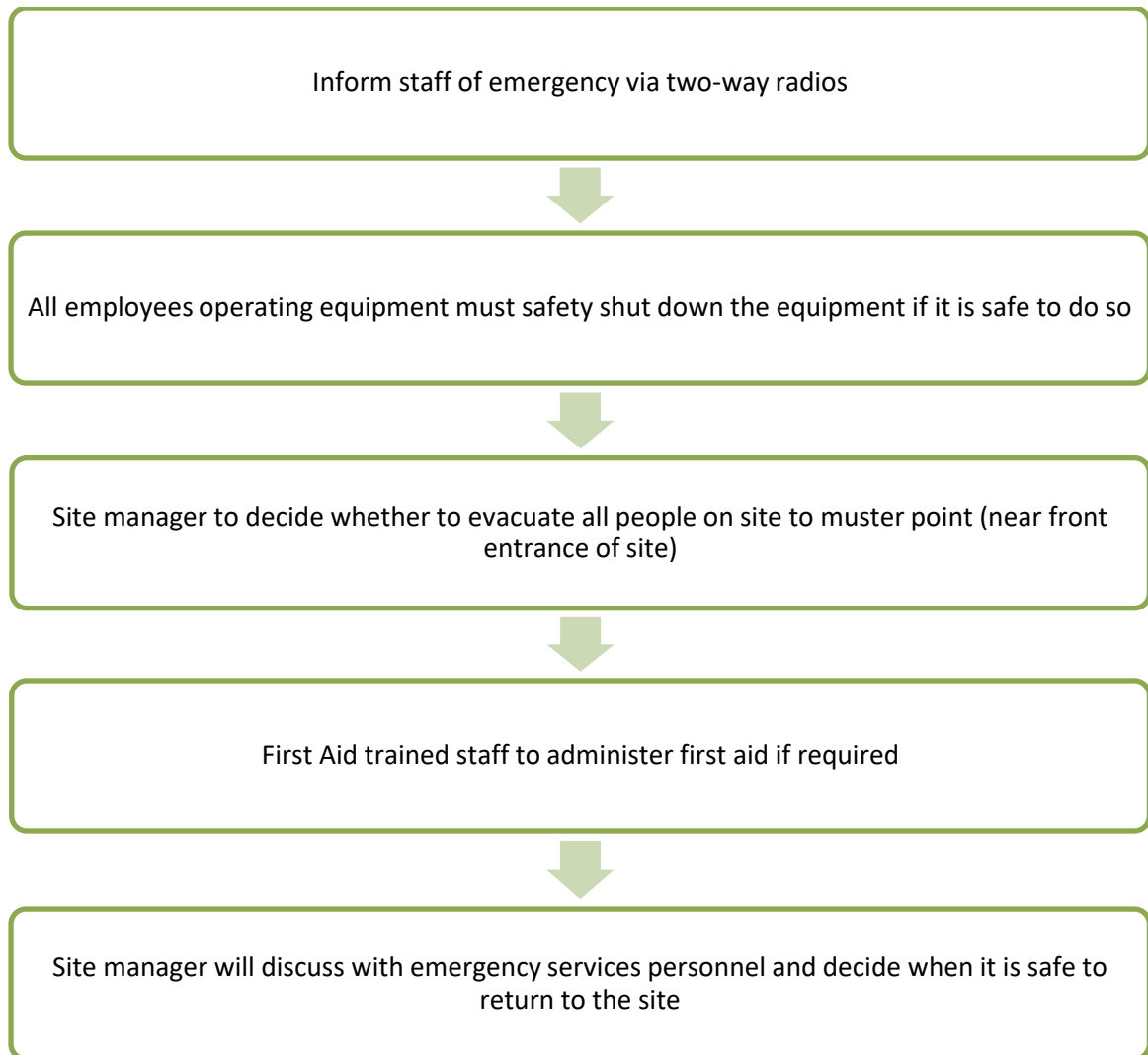
8. ACTIONS TO BE TAKEN DURING OR IMMEDIATELY AFTER A POLLUTION INCIDENT



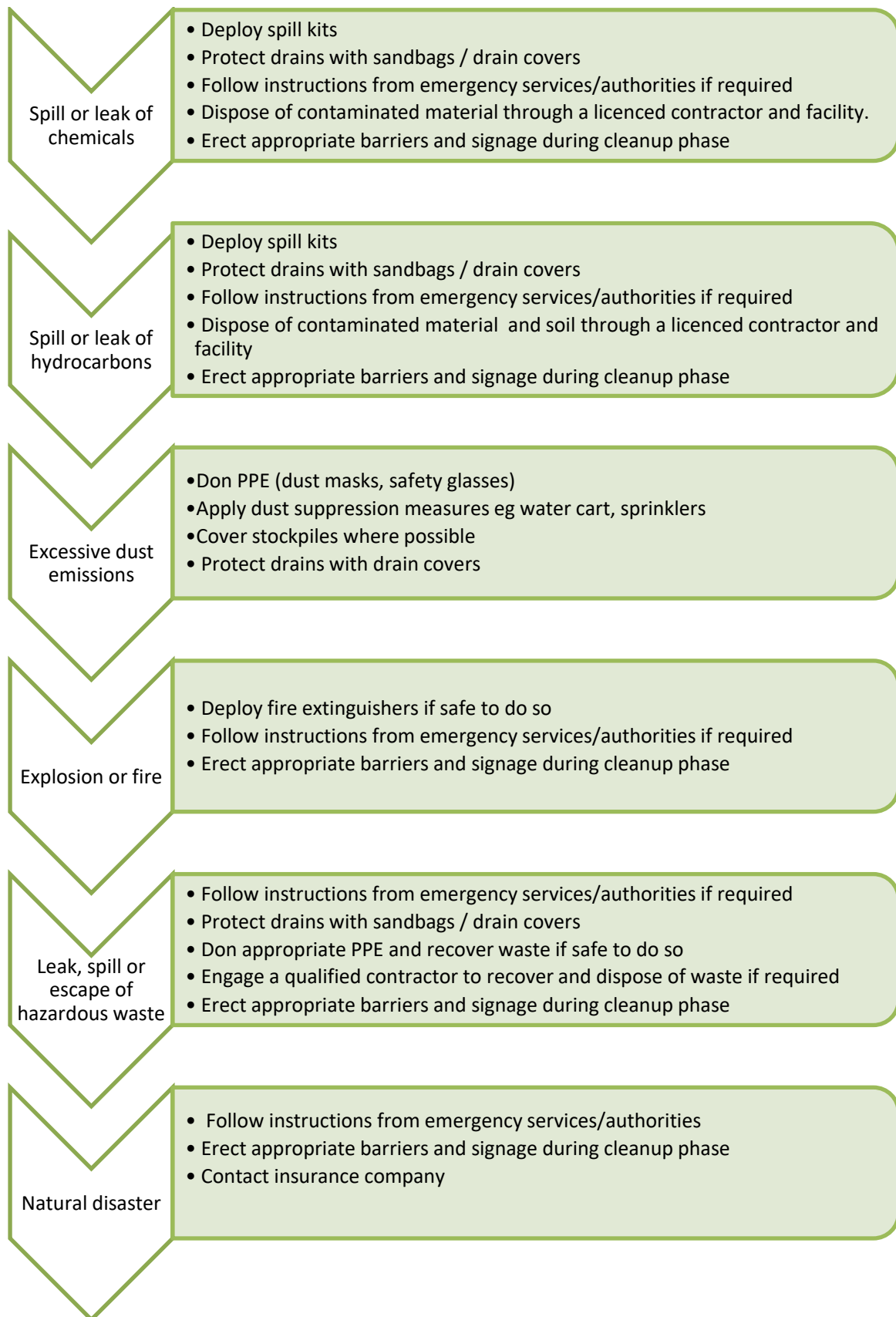
8.1 Notify agencies



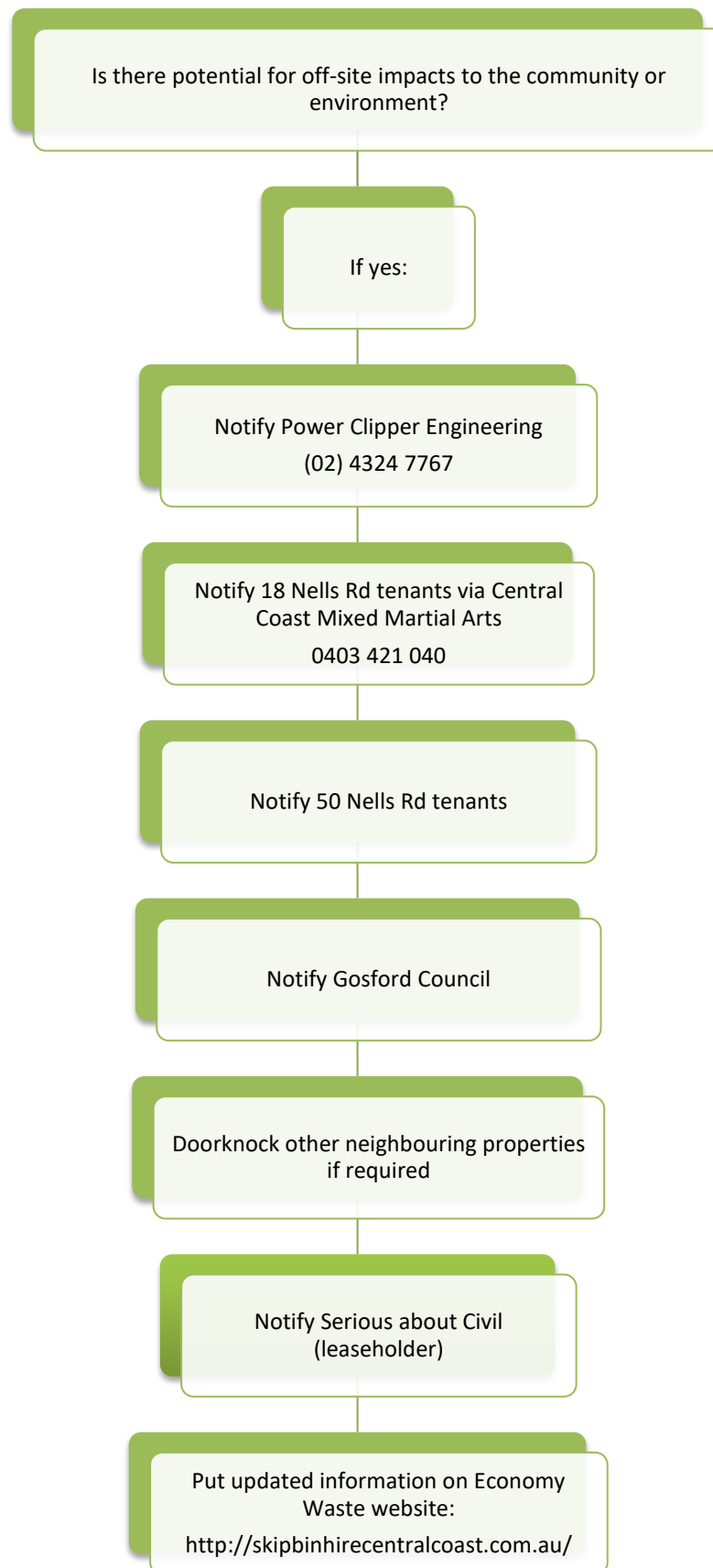
8.2 Minimise harm to people on the premises



8.3 Reduce and control pollution



8.4 Communicate with neighbours and the community



9. STAFF TRAINING AND TESTING THIS PLAN

9.1 Staff training

All new employees will be made aware of the requirements of the plan as part of their induction process.



All employees will be trained in the use of spill kits and fire extinguishers.



All employees are required to complete refresher training on a regular basis.



In addition to the above induction and training, details of this plan will be provided to key contacts on site and off site on request.

9.2 Testing this plan

This plan will be reviewed once a year to ensure that the information contained within the plan is accurate and current. If necessary, the plan will be updated as a new version.



Evacuation drills will be carried out at least once a year.



Improvements identified in the review and drills will be implemented.



Records will be kept of the reviews and drills, their outcomes and any improvements identified and implemented.

10. LOCATION OF POLLUTANT STORAGE, EVACUATION POINT AND DRAINS

Figure 4 Location of pollutant storage, evacuation point and drains



Image 2 Stormwater drain with filter near main gate